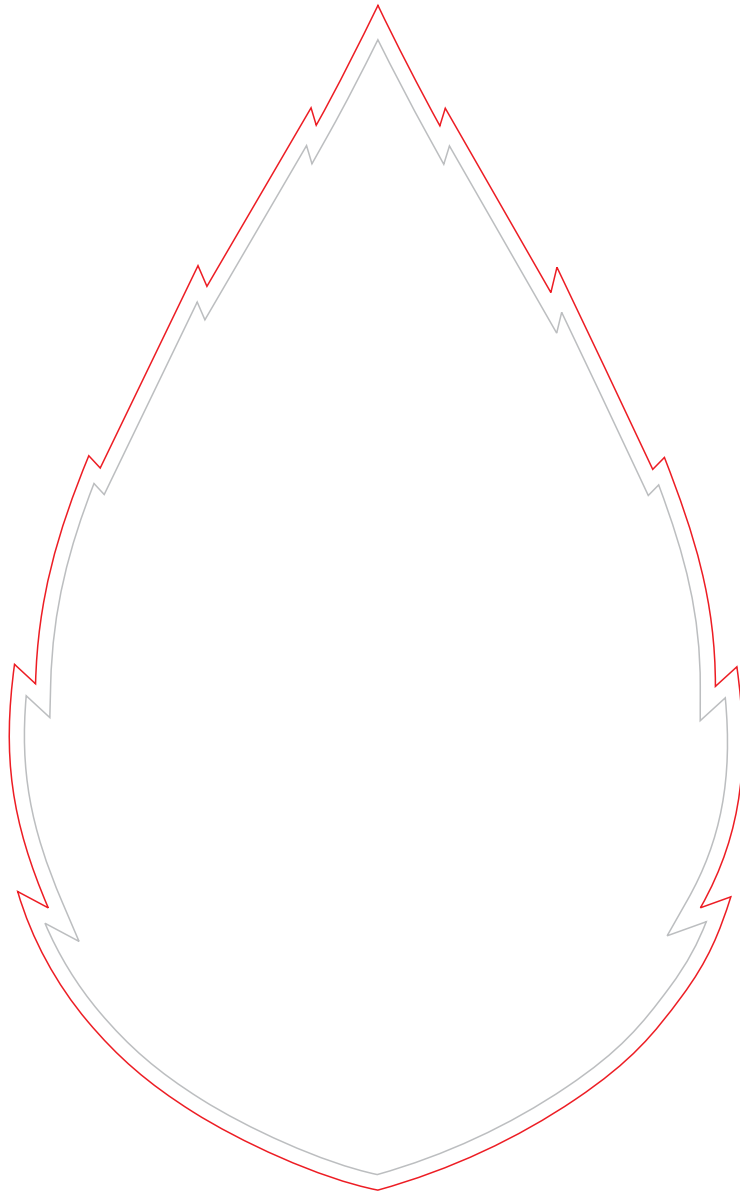
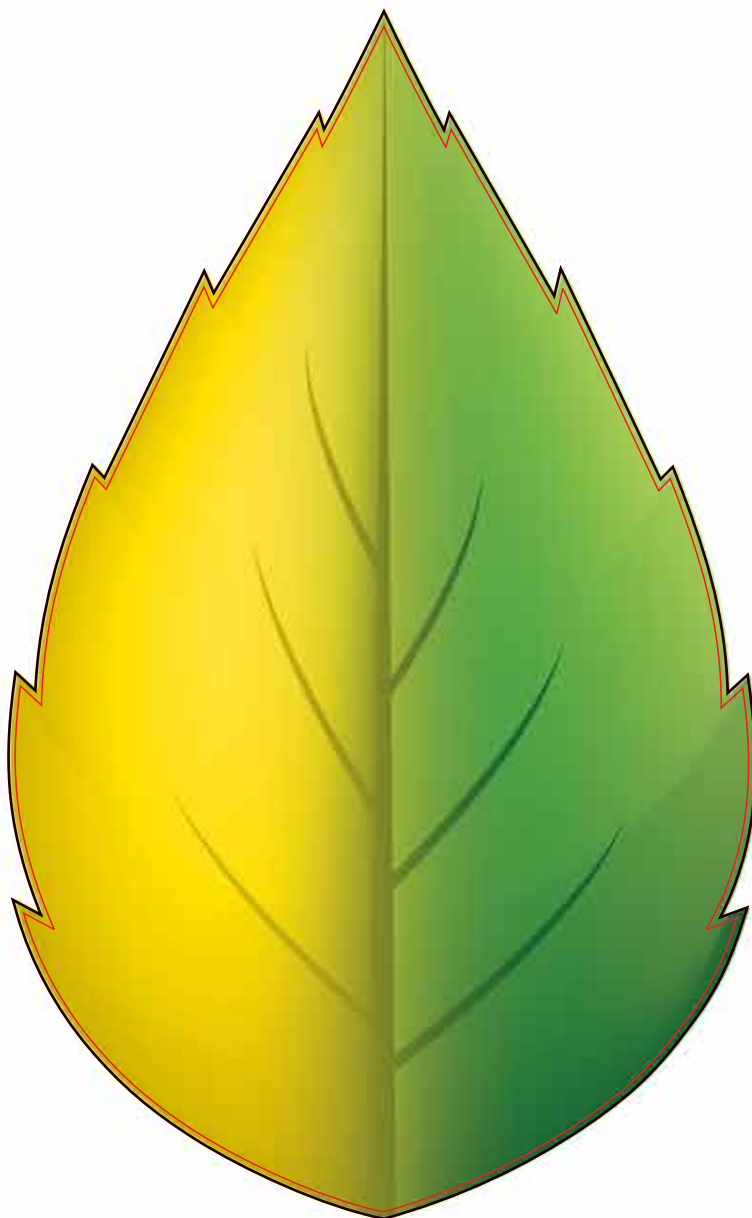


**THE MOST PROMISING COLOUR OF EARTH IS
FADING AWAY...**



**WE ARE COMMITTED TO RESTORE
IT'S GLORY! LET'S WORK TOWARDS
A GREENER TOMORROW**

ENERGY, AS IT SHOULD BE



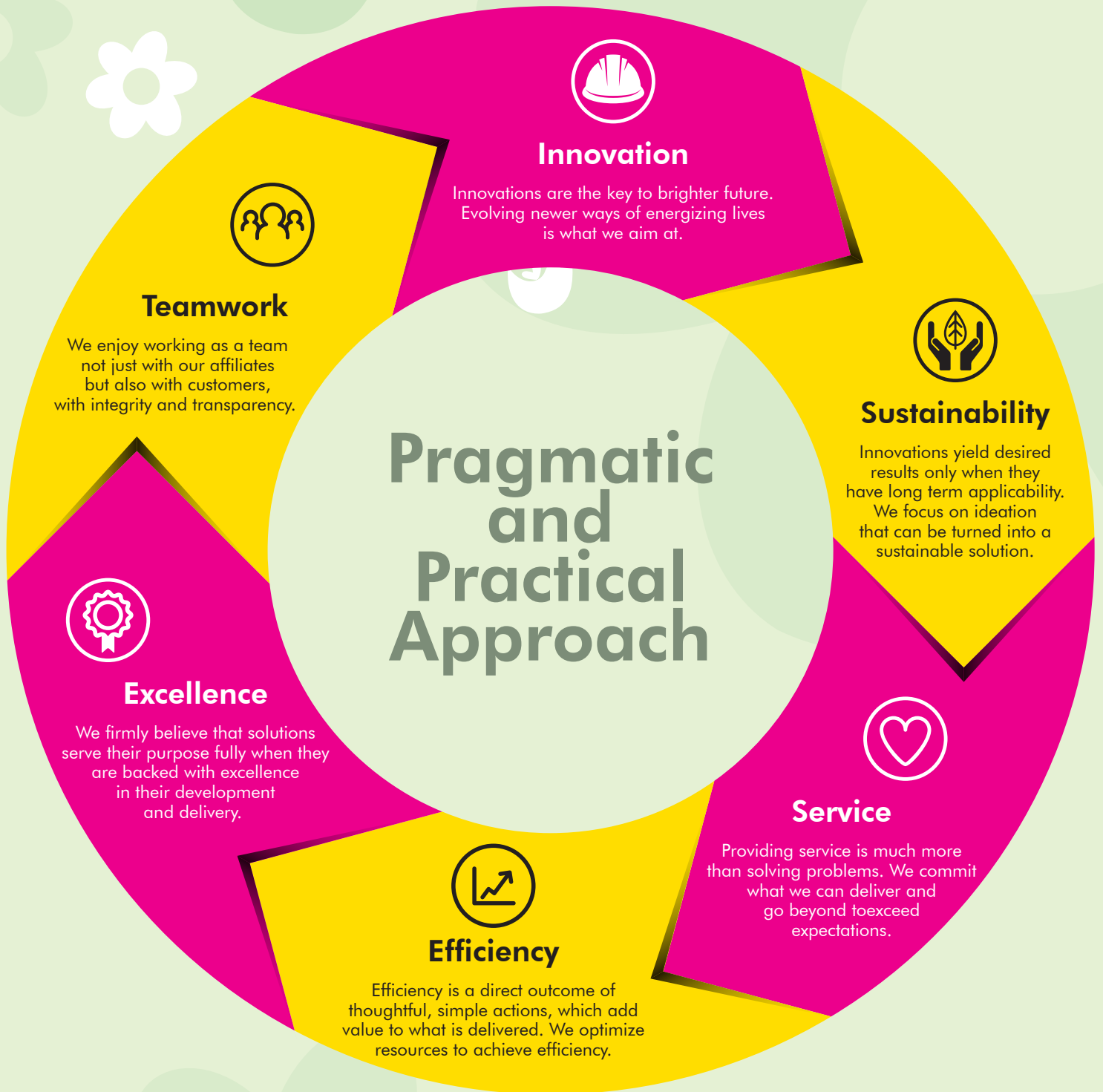
The planet earth is indeed a beautiful place to live in. It is our responsibility to let it remain as it is. We ought to do at least that much for our next generations' joyful future.

One of the most promising ways of ensuring this, is managing energy at it should be. At Uratom, we are committed to think and act green. We encourage and help people to harness the infinite energy of the Sun and reduce the burden on the conventional energy sources.

Together, let's ensure greener and happier future for all.



**BETTER ENERGY FOR
CHANGING WORLD**





SPREADING WARMTH WITH SOLIDARITY

Company Profile

After 39 years of experience in solar solutions, "Hiramrut Group" is back with more power, absolutely upgraded products and very impactful name (URATOM) Yes, Uratom Solar (India) Pvt. Ltd. - AN ISO 9001:2015 & ISO 14001 certified company, is one of the largest manufacture of eco-friendly & pollution free products like Solar Water Heater, Solar PV Modules, Solar Rooftop system, On Grid Inverters, BLDC Solar pump, E-cycle & EPC system. USIL is committed to manufacturer & supply the solar product with quality, reliability, long life for clean & green environment for next generation.

Having state-of-art production line supported by own R & D , USIL ensure for high quality with higher efficiency solar products for domestic, commercial as well as industrial purpose. Production, drawing & designing is prepared & finalized under strict quality inspection by qualified engineers.

Uratom is working on 'Solar Energy' field since 1984 & it is the founder of Hiramrut Energies Pvt. Ltd (HEPL). The company is an of ISO 9001:2015 & 14001 certificated for quality management system for better product and service. Due to upgraded higher rating from a reputed rating agency, our company is now channel partner of MNRE to avail the benefits of subsidy on various solar products. We have large dealer network in Gujarat as well as Rajasthan, Maharashtra, Jharkhand, Odissa, Chhattisgarh, Madhya Pradesh, Karnataka, North East, Delhi, Haryana, Himachal Pradesh, Punjab and Jammu & Kashmir.

Mission

We intend to promote use of solar energy by...



Vision

Creating sustainable and eco-friendly future for our Mother Earth by optimum use of solar energy & saving fossil fuels.

Quality Policy

We are committed to achieve customer satisfaction by quality products - hot water solution and solar power systems. Also committed to provide better work culture and pollution free environment for factory employees & minimizing pollutions.

We are committed to fulfil our integrated management system as per international standards & applicable legal provisions.

We will ensure persistent progress in integrated management system by preventing pollution & fulfilling quality objectives, targets, programmes and legal requirements.

Renew Energy

URATOM supports renewable energy such as solar & wind energy to reduce the climate changes.

Every community and person can play an important part in accomplishing a global solution. We are working to empower our customers with new opportunities for energy savings and with the up-to-date, practical information they need about ways to use energy more wisely and save money, too. In this century, we are focused on the opportunity to provide universal access to energy efficiency along with our traditional mission. We are equipped to take on this new challenge with our skilled employees, our well-known brand reaching into millions of homes and industries, and our ability to invest to achieve long-term public benefits. We want to do more than simply be part of the solution. We want to create solutions that lead to a better, greener energy future, redefining what it means to be an energy company with a strong environmental commitment at its core.

We are proud to contribute to environmental progress like this. We are determined to continue working for a brighter and greener future.



**DEVELOPING AND DELIVERING
INNOVATIVE, ACCESSIBLE,
VIABLE AND AFFORDABLE
SOLAR SOLUTIONS**





Largest ETC manufacturing plant with upgraded technology and highly experienced engineers, Uratom busts up their energy in largest Solar Water Heater manufacturing plant in India which spread in 1,92,300 Sq. Feet. Uratom believes in quality products with aesthetic look that passes all quality processes as assured.



Ultra – Modern Sheet Metal Shop

Uratom have a state-of-art sheet metal shop for the structure supporting Solar Water Heater, fabrication process carried out with world-class CNC / NC and PLC's Machines for complete perfection.

Automated Welding Line

Uratom has automatic welding TIG & MIG machine, for vertical, cylindrical and nipple welding, with enhanced production capacity (300+ pcs per day) in G.I Tank. Also latest machines for production of Heat pump as well as solar Inverters.

Tougher cylindrical tank made up with finest mild or low carbon steel. Whole tank is coated with heat resistance modified food grade coating protects against corrosion and ensures longest service free life.



Robust stand design

We believe that the best product must have best base to support that's why we make stand from 1.4 mm thick galvanised metal sheet, bend it with Automated Roll Forming machines with perfection. The rust / corrosion free stand matches with the solar water heater's long life which contributes satisfaction to our customers.

Specially designed super solid stand, made up of high thickness GI sheet using welding less technology. We undertake 7 tank process and Pure Poly Propylene powder coating ensures longer life, which is highest UV resistance and protects against corrosion.



Puf

An environment friendly insulation material is injected through automated rail track insulation PUF station with high pressure, increased thickness and density, superior quality PUF which keeps water hot for longer time even at coldest region and days, also enables us to meet the market demand promptly.



Powder Coating

One of the most important parts of Solar Water Heater is its aesthetic look as Solar Water Heater is always on the top of the house and it is mostly visible to everyone.

Here Uratom has its own Powder Coating Treatment Plant with 07 tank for cleaning the surface and basic treatment for long lasting performance. High grade adhesive is used which increases the life of the Powder Coated Part and the coating remains for very long time. The powder is made of Poly Propylene which gives immense durability against the Sun's Ultra Violet Rays. So the Solar Water Heater color never fade away.



NDC Machine (Non Distractive Cutting)

- Lowest Chances of Micro Crack.
- 30% Higher Mechanical Strength of Cell.
- Lower the chances of Snailing.
- Increase Module Life & Efficiency.
- Best Quality Cut Cell (NDC).



Solar PV Modules Assembly

Uratom is at the forefront of manufacturing advanced solar PV modules or solar panels that enable our customers to meet their energy requirements sustainably and efficiently. We design, engineer and manufacture high-quality solar PV modules that are built to last, delivering maximum efficiency and long-term performance.

Our state-of-the-art manufacturing facilities with the latest European 12 BB automated line and cutting-edge technology ensure that our products meet the highest standards of quality and durability. With years of experience in the solar industry, we are dedicated to providing our customers with the best possible products and services.

We offer a range of different solar PV module options to suit different needs and applications, and our expert team is available to help you choose the best solution for your specific needs. Whether you're looking to power your home, business, or community, we have the expertise and resources to help you achieve your goals.



Why Uratom Solar PV Modules?

1. State-of-the-art European 5-12BB Automated Line.
2. Best Quality Cut Cell (NDC).
3. India's Strongest PV Modules (2.5 & 2.0 mm thick aluminum frames with Central Support)
4. Maximum Soldering area for better performance.
5. Accurate String alignment.
6. 330-580 WP range of PV Modules.
7. Uratom's Strong and experienced Network.
8. Lowest the chances of Snailing.



Solar Water Heater (ETC)



*Conditions Apply

Model :
Uratom Ray



*Conditions Apply

Model :
Uratom Bharg



Anti
corrosive
stand



Robust
stand
design



Designer
tank cap



ISO
9001:2015 &
ISO 14001
Certified
Co.



Save
Electricity



Save
Money



High Thermal
Efficiency



MNRE
Approved

Technical Specifications of Vacuum Tube

Material	1.6mm Borosilicate 3.3 glass
Outer Diameter	58mm / 70mm (whatever applicable)
Inner tube diameter	47mm / 54mm (whatever applicable)
Tube Length	1800mm / 2100mm (whatever applicable)
Absorptive coating	CU - AL - N / SS (Three Layer)
Vacuum	$P < 5 \times 10^{-3}$ PA
Absorptance	$> 92\%$ (Am1.5)
Glass thickness	1.6mm
Emittance	$< 8\%$ (80°C)
Thermal expansion	3.3×10^{-6} °C
Stagnation temperature	$> 200^\circ$ C
Heat loss	< 0.8 w/sq.mtr.
Maximum strength	0.8 MPa

Benefits for You

- Reduction in conventional energy consumption, saving fossil fuels.
- Substantial savings on conventional heating bills.
- Higher predictability of heating costs.
- Reduced dependence on energy imports.
- Proven & reliable technology.

Technical Specifications for Tank

Inner Tank	(Ray) 1.6mm Galvanized Iron (G.I) TIG Welded (Bharg) 2.5mm Galvanized Iron (G.I) TIG Welded
Inner Coating	High Grade Anti-Corrosive Coating/Special PL Coating
Outer Cladding	0.45mm Galvanized Iron (G.I) with P P Powder Coating
Insulation	50mm PUF (38kg. / mt ³ density)
Stand	1.4mm (G.I) with P P Powder Coating or 30 x 30 x 3mm M.S with P P Powder Coating
Connections	1"
Electric Backup	1.25"

Benefits for You

- Get Average 50° to 65°C hot water at any time at almost zero recurring expense.
- 50mm PUF Insulation retains heat for a longer duration.
- Once installed, no worry of frequent maintenance.
- Better and longer product service span due to tube's larger diameter.
- Increased heating efficiency due to specially developed triple coated glass tube.
- 100% dependable compared to Gas & Electric Geyser.
- Keeps environment clean as 100 litres SWH prevents 1.5 tonnes carbon-dioxide emissions per year.

Solar Water Heater (FPC)



Save
Electricity



Save
Money



High Thermal
Efficiency



MNRE
Approved

Model :
Uratom FPC



*Conditions Apply

Technical Specifications of Tank

Capacity	Equal to system capacity.
Material	SS 304 Non magnetic stainless steel or epoxy coated G.I.
Welding	TIG welding (Argon inert gas welding) for SS304.
Thickness	Suitable for tank capacity.
Insulation	Glasswool sheets 100 mm thick.
Cladding	PP Powder-coated G.I. sheets / Aluminum Cladding.
Back up	Electrical coil of 2 KW (Optional).
Pressure rating	0.5 Kg/cm.2 for normal systems; 3.5 - 5 kg/cm.2 for pressurized systems.

Technical Specifications of Collector

Brand	"URATOM"
Overall size	2030 mm x 1030 mm x 95 mm.
No. of fins per collector	9
Absorber area	Approx. 2.06 sq.m
Absorber coating	NALSUN Solar selective coating on copper (black chrome on copper with or without nickel undercoating).
Absorptivity	0.92 - 0.96
Emissivity	0.10 - 0.15
Temperature tolerance of coating	More than 200°C
Absorber sheet (Copper)	0.12 mm thick x 1900mm L x 155mm W
Riser (Copper tube)	O. D. 12.7mm x 0.5 mm thick x 1922 mm L
Bonding between riser Tube and absorber	Ultrasonic welding.
Bonding between riser Tube and header	Copper brazing.
Hydraulic Test pressure	5 kg/ sq.cm.
Rated pressure	2.5 Kg/ sq. cm.
End connections	Brass flared Flanges of threaded 1" BSP.
Collector box	Specially Extruded Aluminum sections.
Box-back sheet joint	Pop riveted.
Box-corner joints	Screwed.
Back sheet	Aluminum sheet 0.6 / 0.7 mm thick.
Reflector	Aluminum foil 0.02 / 0.05 mm thick.
Glazing	Toughened & tempered glass 4 mm thick-free From bubbles and scratches.
Transmittance	> 0.82
Sealing	Silicone sealant.
Back Insulation	Resin bonded Rockwool 50 mm thick. $R=1.67 \text{ M}^2 \text{ } ^\circ\text{C} / \text{W}$, $K=0.052 \text{ W} / \text{M}^2 \cdot \text{k}$
Side insulation	Resin bonded Rockwool 25 mm thick.
Grommets & gaskets	EPDM rubber.
Thermal performance	$\text{FRUL} \leq 6 \text{ W} / \text{M}^2 \text{ } ^\circ\text{C}$, $\text{FR (T\&) } \geq 0.65$



Heat Pump

Uratom Heat Pump (UHP) Series

Uratom Heat Pump (UHP) Series is more efficient solution for heating water. It utilizes naturally available heat from water, ground and even winter air and applies a vapor compression refrigerant cycle, consuming nearly one quarter of the electrical energy required for traditional water heating. At 75% reduced energy consumption, this contributes to cleaner air.

Uratom has developed a full range (from 200 Litres/hr To 1500 Litres/hr) of UHP water heating units built on heating optimized Special Compressors to provide seasonal efficient heating capacity and effective domestic hot water production in residential and commercial building applications. These are available for use with multiple refrigerants like R417A, R407C, R22 and R134A.

It is designed to deliver 55°C - 60°C water temperature irrespective of the weather conditions. It can operate from a wide ambient from 10°C to 43°C. UHP unit come fitted with Best - In - Class "Shell & Tube" heat exchanger technology. These are easier to service compared to other available condensers in field. Shell & Tube heat exchangers are the perfect solution for sites where the water quality is very poor. UHP series are designed for simple & easy operation in the field for end - users like Hotels, Hostels, Factories & Restaurants, etc. These units come with "Simple User Interface" which allows service teams to get advance warnings about field failures, simple error codes for easy diagnosis & trouble shooting. This reduces down time and increases system's life.



Energy Saving Chart

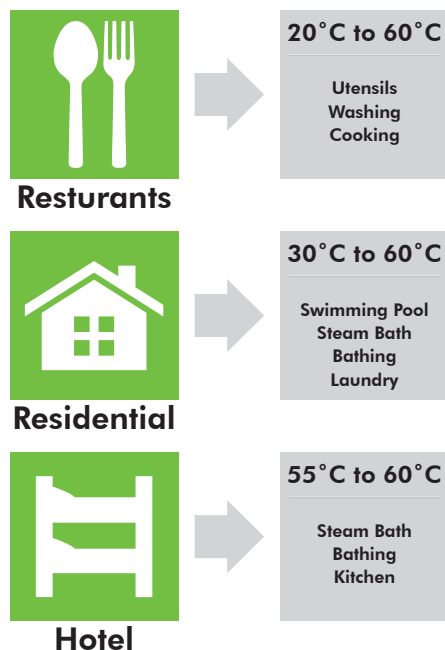
Significant Energy Saviang Compared to Traditional Heating System Delivers ROI within a Year

Hot Water Qty/Day	Litres	2800					Number of Shower
Water in Temp	°C	30					(No/Day) (Typical)
Water out Temp	°C	60					70
Total Heat Energy	Kcal	84000					
Solar System							
		Commercial				LPG	
	Unit	Heat Pump	Commercial	Solar with 50%	Solar with 100%		
		Heating	Electric Heating	Electric Backup	Electric Backup		Diesel
Fuel Unit	Varies	Kwh	Kwh	Kwh	Kwh	Kg	Litres
Energy/Fuel Unit	Kcal	860	860	860	860	11100	10994
Avarage COP of System	Ratio	3.50	0.95	0.95	0.95	0.80	0.80
Energy/Fuel Unit in System	Kcal	3010	817	817	817	8880	8795
Reqd Fuel Unit	Varies	28	103	51	103	9	10
Fuel Cost/Unit	INR	8.00	8.00	8.00	8.00	60.00	50.00
Energy Cost/Day	INR/Day	223.3	822.5	411.3	822.5	567.6	477.5
Energy Cost Comparison	%	Base	268			154	114
INR Difference/Day		Base	599.3			344.3	254.3
Annual Energy Saving in INR		Base	218732		105635	125674	92811
Annual Energy Saving in %		Base	13%		56%	61%	53%
ROI@ Heat Pum Cost of 1 Lakhs		Base	0.46		0.95	0.80	1.1

Advantage Of Heat Pump

Hot Water is everyday need for modern living. Traditionally, water is heated by burning fossil fuels or using electric heaters. These traditional methods of water heating consumes much higher energy (electrical or fossil fuels), resulting in energy wastage.

Increasing energy costs of gas or oil heating systems, coupled with the need to meet CO₂ emission targets has resulted in the growing interest for dedicated heat pumps. Rather than burning fossil fuels to produce heat and consequently CO₂ emission, dedicated heat pumps use renewable energy from the environment like air, ground and water. It consumes up to 70% less primary energy and therefore drastically reduce the pollution resulting from the use of fossil fuels.



Product Features



Technical Specification (Swimming Pool / Commercial)

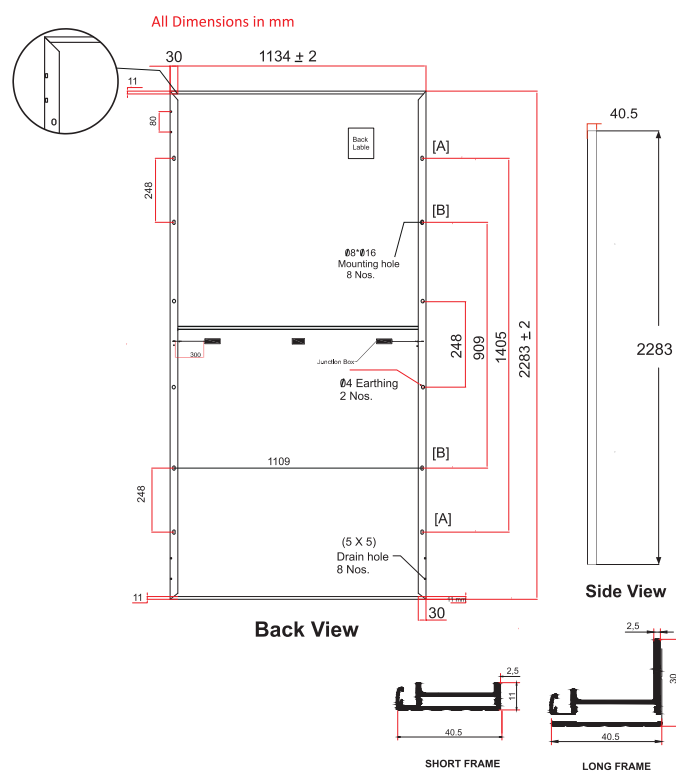
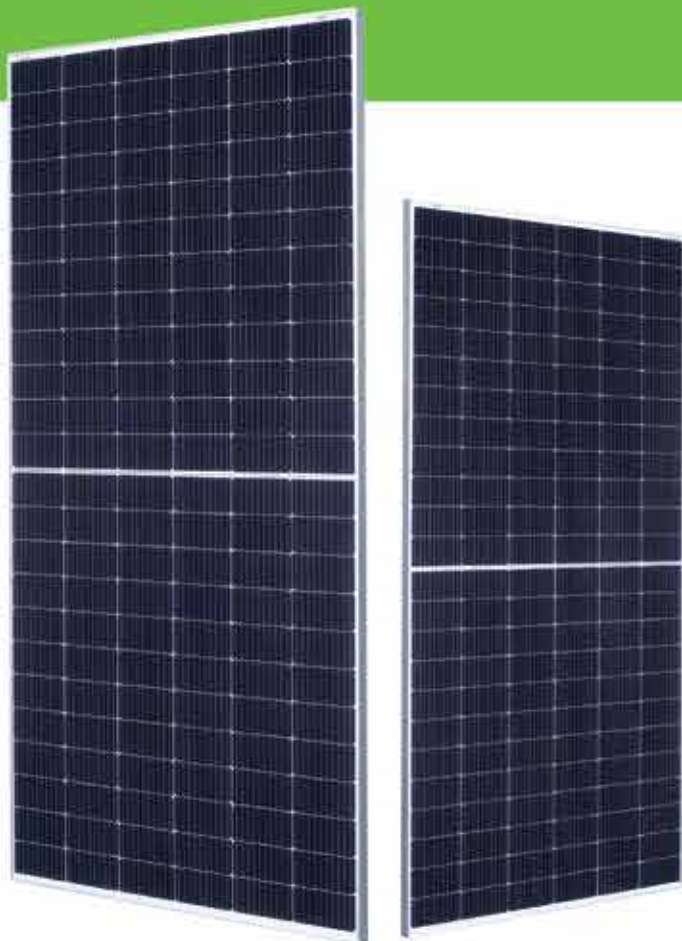
Water Heating		kW	13.5	22.8	33.5	45.7	54.0
Heating Capacity		BTU/h	46080	77824	114346	155989	184319
Cooling Capacity		kW	8.2	13.5	20	30	37
		BTU/h	27989	46080	68200	102400	12628
Heating Input Power		kW	2.4	4	6	8.2	9.6
Cooling Input Power		kW	2.7	4.3	6.5	9.6	12
Heating Input Current		A	11	7.2	10.8	14.7	17.2
Cooling Input Current		A	12.3	7.7	11.6	17.2	21.5
COP			5.62	5.7	5.58	5.57	5.62
Refrigerant			R417A (R22/R407C/R410A for option)				
Power Supply			220V/1ø/50Hz		380V/3ø/50Hz		
Controller Type							
Compressor	Compressor Type		Scroll*1	Scroll*1	Scroll*1	Scroll*1	Scroll*1
	Compressor Brand		Copeland / Panasonic / Hitachi				
Fan Motor		Fan Type	Low noise high efficiency axial type				
		Fan Input Power	W	90	250	250	250
		Fan Speed	rpm	750	850	850	850
Heat Exchanger			Shell & Tube				
Protection	Low Pressure Protection		Yes				
	High Pressure Protection		Yes				
	Automatic Defrosting System		Yes				
	Overload Protection		Yes				
Dimension		Unit Size	mm	1550*845*1180	1550*845*1180	1550*845*1180	1550*845*1180
		Approx. Weight	kg	68	125	220	350
Noise in 1 meter		dB(A)		≤54	≤5	≤58	≤60
Water piping	Water Pipe Size	mm		ø50	ø50	ø50	ø63
	Water Flow Volume	ltr/h		4000	6000	10,000	13,000
Cabinet			Galvanized Power Coated Steel				

Heating Working Condition : Outdoor DB/WB temp : 24°C/19°C, 62.5%RH, Inlet Water Temp : 26°C

Cooling Working Condition : Outdoor DB/WB temp : 35°C/24°C, 68%RH, Inlet Water Temp : 30°C

Sienna Topcon (Cell-10BB) PV Modules 144 Cells 550-580Wp

Module Technology
Half Cut N-type
with excellent quality



Mechanical Specification

Model	Sienna 144 Half Cut (N-Type) Cell Family
Cell Type	TopCon bifacial 10 BB
Junction Box	Splited Junction Box
Cable & Connector	400mm with 4mm ² Mc4 Connector
Frame	Anodized Aluminium Frame (40.5mm Height x 2.5mm Thickness)
Glass Dimension	2278mm x 1128 x 3.2mm
Load Test	Front-5400 Pa, Back- 2700 Pa
Back Sheet	PVDF 1500 VDC 350 Micron Transparent Sheet
Application class	Class A
Electrical Safety Class	Class II
Fire Safety	Class C (Type 1)
Mounting Holes Pich (Y)-mm	[A] 1405 [B] 909

Key Features

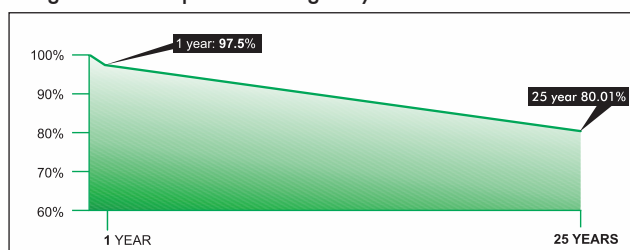
ARC Tempered glass	Anodize Aluminium
10 BB Solar Cell	High Modulem efficiency
EL Checked	Tolerance ± 5W
IP67 / IP68 JB	Quality Assurance

Warranty

Performance Warranty	25 years for linear power
Product Warranty	10 years

Performance Warranty

Degradation rate:
10% degradation of power during 10 years and 20% degradation of power during 20 years



High Efficiency



Better Performance



Enhanced Performance



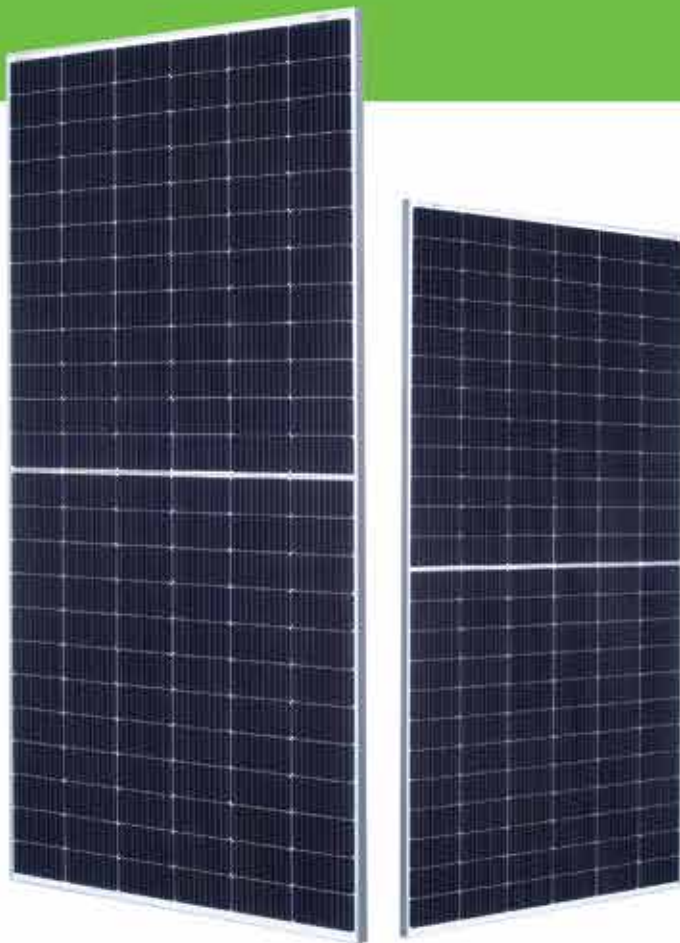
Outstanding Durability



Global Certifications

Helios Mono PERC

Monocrystalline Solar PV Modules
144 Cut Cells



Bhaskara Poly

Polycrystalline Solar
PV Modules 72 Cells



Mechanical Specification

Model	Helios 144 Half Cut Cell Family
Cell Type	Mono crystalline Cell 10 BB
Junction Box	Splited Junction Box
Cable & Connector	400mm with 4mm ² Mc4 Connector
Frame	Anodized Aluminium Frame (40.5mm Height X 2.5mm Thickness)
Glass Dimension	2273mm X 1129 x 3.2mm
Load Test	Front-5400 Pa, Back-2700 Pa
Encapsulate	PID free Ethylene Vinyl Acetate Sheet
Back Sheet	UV protected reflective backsheet
Application class	Class A
Electrical Safety Class	Class II
Fire Safety	Class C (Type 1)
Mounting Holes Pich (Y)-mm	[A]1635 [B]1139

Mechanical Specification

Model	Bhaskara 72 Cell Family
Cell Type	Polycrystalline Cell 5 BB
Junction Box	IP67 / IP68
Cable & Connector	1200mm with 4mm ² Mc4 Connector
Frame	Anodized Aluminium Frame (40.5mm Height X 2.5mm Thickness)
Glass Dimension	1980mm x 995mm x 3.2mm
Load Test	Front-5400 Pa, Back-2700 Pa
Encapsulate	PID free Ethylene Vinyl Acetate Sheet
Back Sheet	UV protected reflective backsheet
Application class	Class A
Electrical Safety Class	Class II
Fire Safety	Class C (Type 1)
Mounting Holes Pich (Y)-mm	[A]1456 [B]960

Key Features

ARC Tempered glass	Anodize Aluminium
5 BB Solar Cell	High Modulem efficiency
EL Checked	Tolerance \pm 5W
IP67 / IP68 JB	Quality Assurance

Warranty

Perfomance Warranty	25 years for linear power
Product Warranty	10 years



High
Efficiency



Better
Performance



Enhanced
Performance



Outstanding
Durability



Global
Certifications

Solar Rooftop - Industrial/Commerical



When it comes to commercial solar installation in India, Uratom Solar takes the lead with its state of the art production facility, quality products and its EPC solutions. It's the prime responsibility of an EPC Company to familiarize business owners about Renewable energy before it is being endorsed.

However, this is not the only gain. The reason why the concept of commercial solar park and solar rooftop in India is popularity gaining is because of its endless opportunities to earn better profits, by saving Electricity as well as Accelerated Depreciation on purchased system. Rooftop solar power plant, commonly known as rooftop solar system, is a photovoltaic (PV) plant that has its PV panels installed at rooftop of a building. The urban environment provides a large amount of empty rooftop spaces and can inherently avoid the potential land use and avoid environmental concerns.

The maximum dimension of a rooftop solar system depends on the shadow free area available on the rooftop, so rooftop solar systems are usually smaller as compared to ground-mounted photovoltaic power plants. Rooftop solar systems on residential buildings typically feature a capacity of about 5 to 20 kilowatts (kWp); but on commercial or industrial buildings it can be installed in Megawatts, depending on requirement / captive consumption.



Fulfill Your Solar RPO (Renewable Purchase Obligation)

- 🌱 Your own On-Grid Parallel Solar Power Station.
- 🌱 Saving in transmission & distribution losses.
- 🌱 Environmental friendly.
- 🌱 Benefits of Accelerated Depreciation for industrial & commercial purpose.
- 🌱 Green Energy generation for long time.
- 🌱 Rooftop- No requirement of additional land.
- 🌱 Reduction in electricity bill by supplying surplus power to local DISCOM.

Where to Install?



Commercial



Hospital



School



Industries



Shopping Mall

Industrial/Commerical Projects



BLDC Solar Water Pumps



In house manufacturing Solar Pump, Solar Pump Controller, Solar Panel, Solar Water Heater.

Product Range:

- Solar BLDC/PMSM Submersible Pump Range 0.25 HP to 15 HP
- DC Pump Range 0.25 HP to 10 HP Centrifugal Type Monoblock

Technical Detail:

- Solar BLDC/PMSM Water filled submersible pump.
- 8 Pole & 6 Pole BLDC Motors
- 3150 High R.P.M.
- Use of high grade CRNO stamping for higher efficiency
- Use of NdFeb neodymium magnet with NICKEL and marine grade coating for corrosion free long life
- NEMA motor coupling





Better Riding



Throttle Mode



Easy Maintenance



Charge Anywhere



Throttle

- All 3 speed in your thumb. Simply twist & go at 25km/hr speed, without the need for pedaling. PVC make throttle it surely lasts longer and durable.

BLDC Motor

- Patented MID drive technology high torque, 250W BLDC motor, Better balance due to mid drive BLDC increased efficiency to generate more torque, increased reliability, longer life.

LED & LCD Display

- Experience the handle mounted LED display, which allows you to control all functions of your e-cycle, switching the battery on-off, toggling between 4 modes or battery indicator, the Ip65 rated display makes controlling the e-cycle easier in all weathers.

Battery

- Detachable-for security purpose and for easy charging at home / office. BIS certified Li-ion batteries ip67 rating
 - * 5.8Ah-upto 25km range
 - * 6.36Ah-upto 30km range
 - * 11.6Ah-upto 50km range



URATOM SOLAR (INDIA) PVT. LTD.

Regd. Office & Works :

Survey No. 752, P(1), Near Chordi Village,
NH-27, Gondal - 360 311. (Gujarat) INDIA.

P : +91 99250 99249

E : care@uratom.com

W : www.uratom.com

Customer Care

Gujarat : +91 99250 99249

Maharashtra : +91 750700 7003

North India : +91 85888 72866



© Uratom Solar (India) Pvt. Ltd. All Rights Reserved. Reproduction in whole or in part without permission is prohibited.

All the information in this catalogue is based on product range, design & models available as on date of publishing / launching the catalogue.
Uratom Products continuously under go process of improvement & innovate. This specification of our products may vary from the information given in the catalogue.
The company reserves the right to change specifications / product without prior notice.